

Berkeley City College

**Presented to the Berkeley City College Academic Senate Committee
March 16, 2022**

Agenda



- **BCC Milvia Street Expansion**
 - Project Vision
 - Project Schedule & Overview
 - Design Phase Overview
 - Design Highlights
 - Stacking and Massing Perspectives / Exterior
 - Interior Perspectives
 - Floor Plans
 - Next Steps

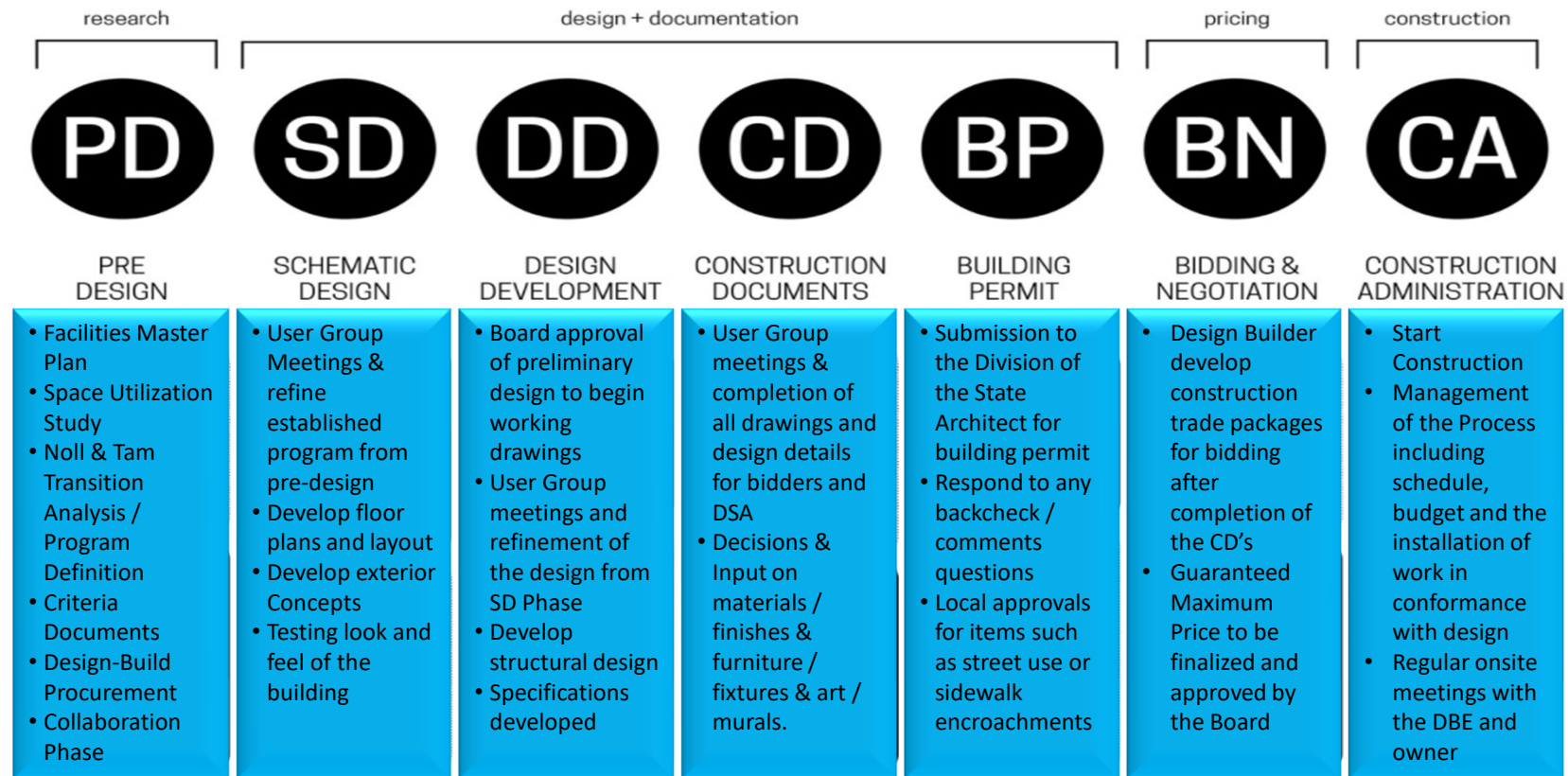


Milvia Street - Schedule Overview

Activity	Target Dates TBD
Programming Phase	May 2021 - September 2021
Schematic Design Phase	September - November 2021
Design Development Phase	November 2021 - January 2022
Construction Document Phase	January 2022 - May 2022
Division of the State Architect (DSA) Review	May 2022 - February 2023
Bidding & Board Approval of the Guaranteed Maximum Price (GMP)	May 2022 - October 2022?
Construction Phase	January 2023 - September 2024
Move-in and Closeout	October 2024 - December 2024



Milvia Street – Design Phase Overview



Milvia Street - Project Vision

PROJECT VISION STATEMENT

- TO** create an *inclusive and welcoming center of teaching and learning*
- FOR** *vibrant engagement* across the *diversity of our community*
- THAT** is a new *dynamic hub* which expands the *campus presence* in the heart of downtown Berkeley
- BY** *acknowledging our past* while reimagining our future



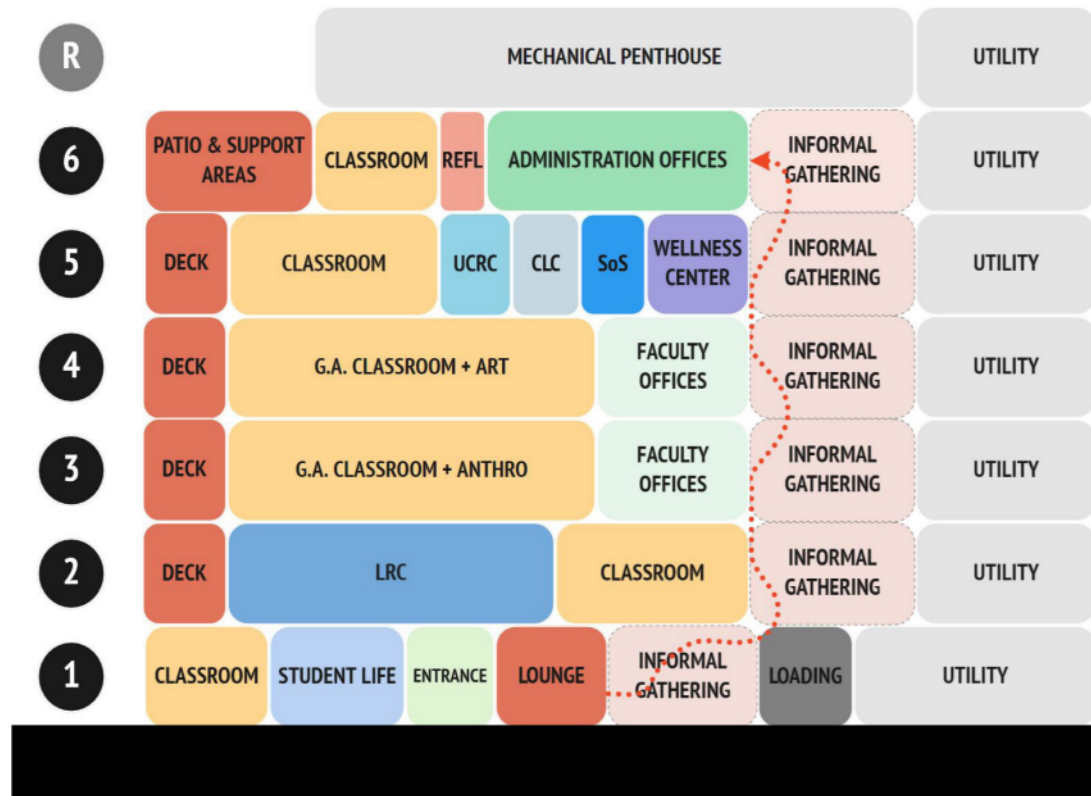
Milvia Street - Design Highlights



- Welcoming Center Vision
- Corner Entrance
- Bookstore (Remains at Center Street)
- Student Life Offices and Meeting Room (Level 1)
- Faculty Offices (Level 3 and 4)
 - Instructional Dean Office and Meeting Room
- Expanded Student Services on 5th Floor to include:
 - UCRC, Society of Scholars (SoS), Umoja, Puente, and CLC
- Mental Wellness and Health Center (combined as Wellness Center)
- Associate Dean – Student Services (Level 5)
- Welcoming Approach to the Administration Suite (Level 6)



Milvia Street - Stacking Diagram

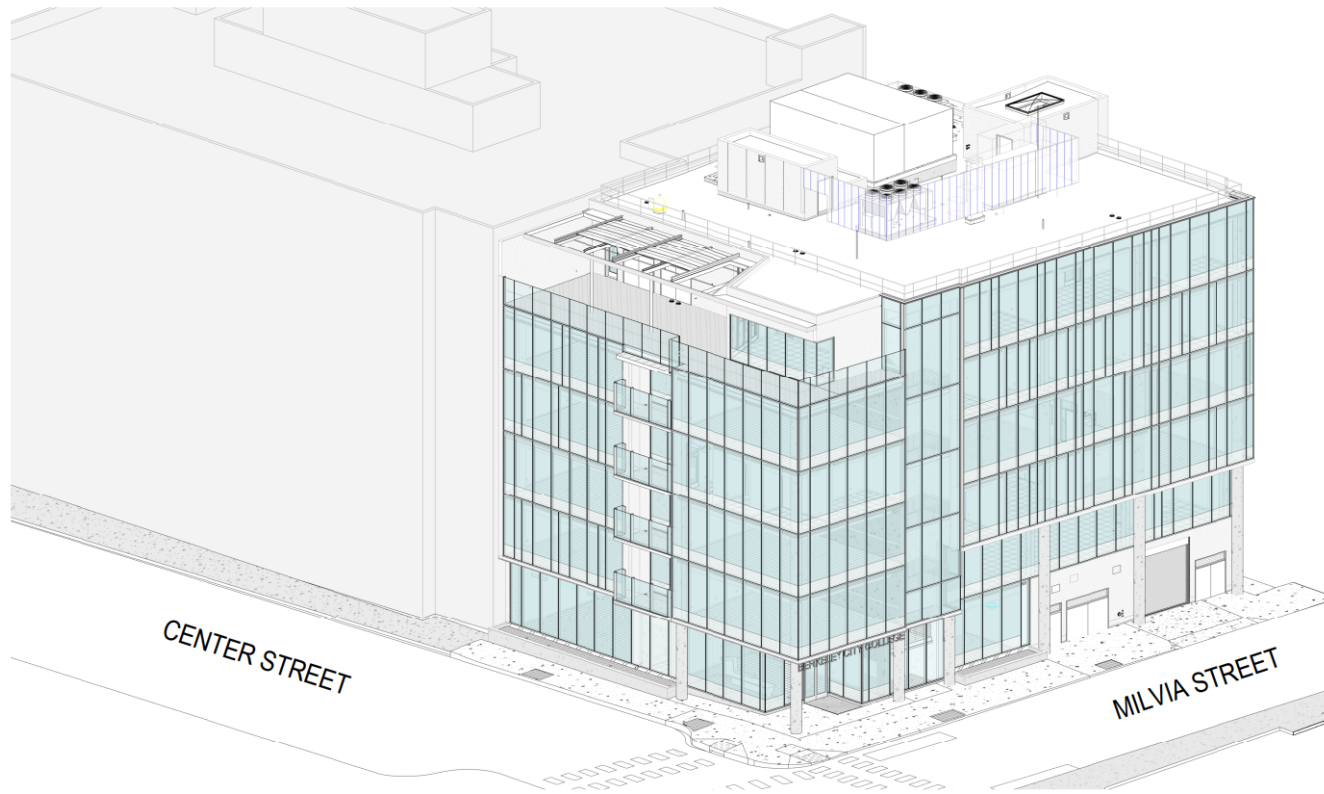


Stacking Diagram



Milvia Street – Exterior Perspectives

SOUTHEAST AXONOMETRIC



Milvia Street – Exterior Perspectives



LOOKING DOWN MILVIA STREET AT THE NORTH BUILDING ELEVATION

Milvia Street – Exterior Perspectives



Milvia Street – Exterior Perspectives



Milvia Street – Exterior Signage



PREFERRED OPTIONS



OPT 1
*Monogram Opaque XL
One-sided*



OPT 2
*Full Vert Semitransparent L
One-sided*



OPT 3
*Full Vert Opaque M
Two-sided*



Milvia Street – Interior Perspectives



Milvia Street – Interior Perspectives



Milvia Street – Interior Perspectives



Milvia Street – Interior Perspectives



Milvia Street – Interior Perspectives



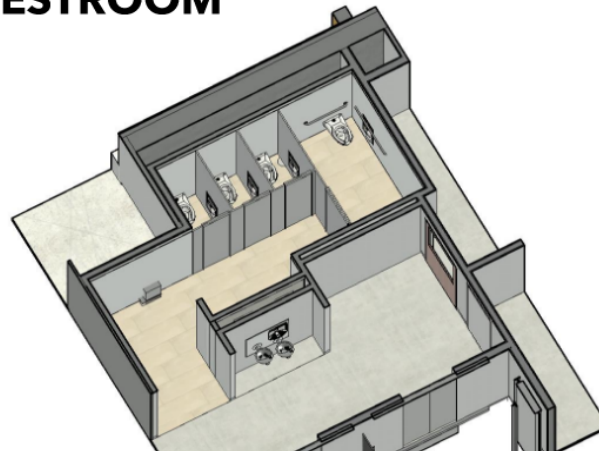
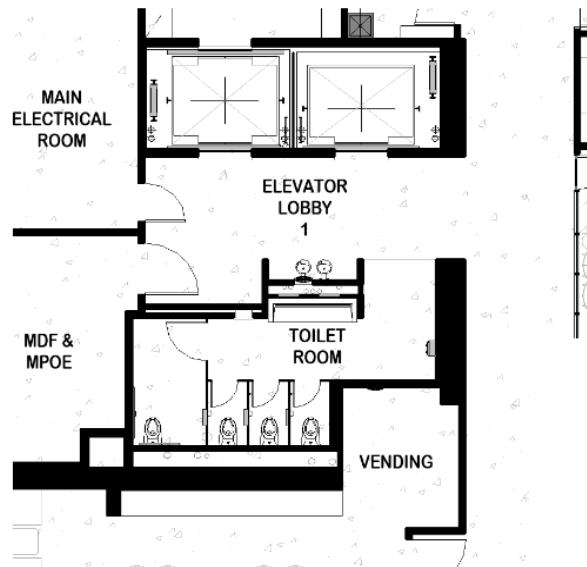
Milvia Street – Interior Perspectives



Restrooms

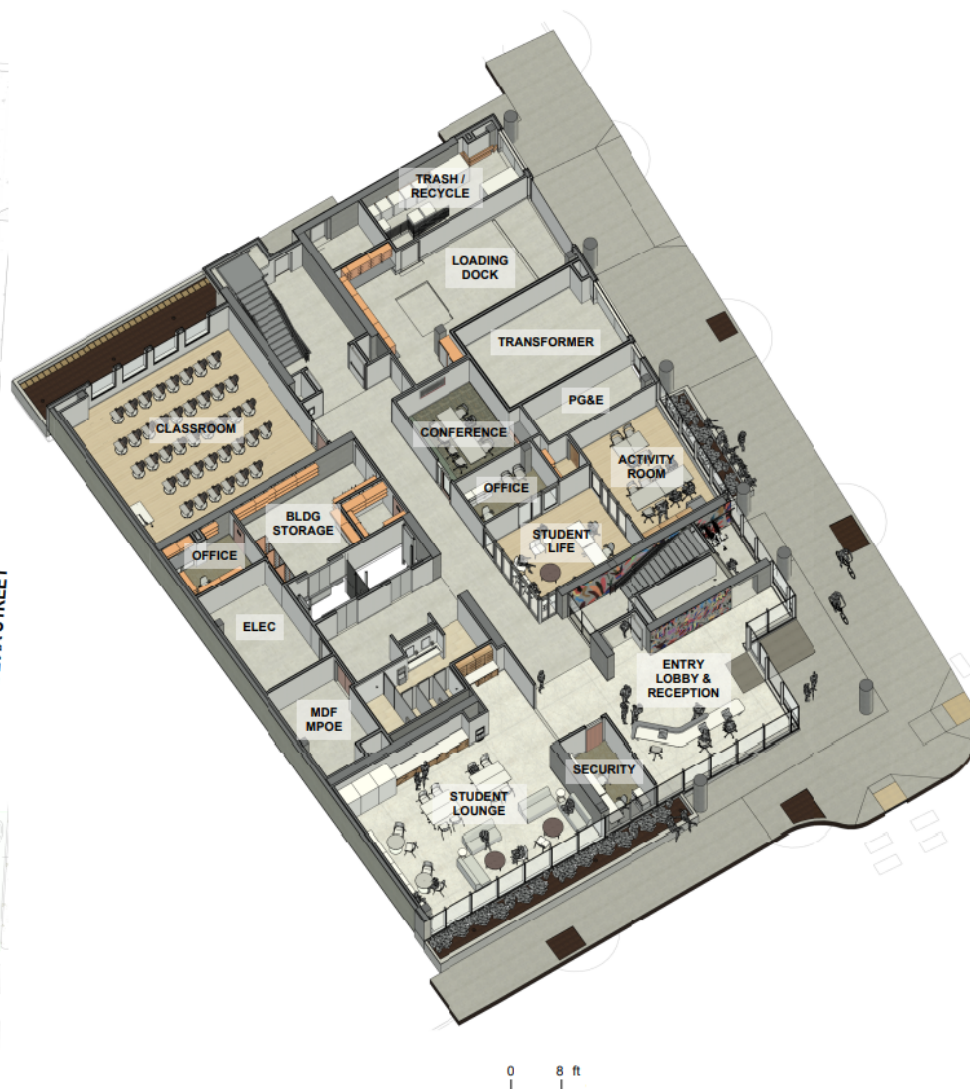


TYPICAL MULTI-STALL ALL GENDER RESTROOM



Single User Restroom:
on Levels 3, 5, & 6





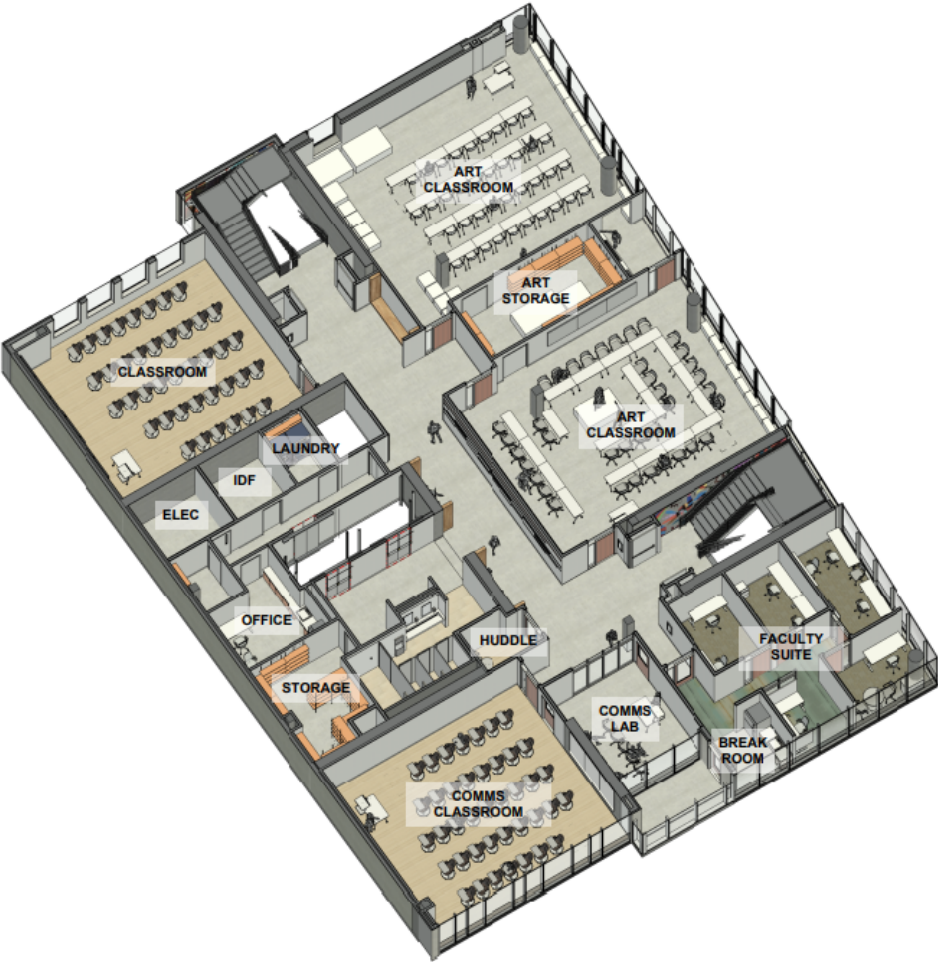
LEVEL 2 - FLOOR PLAN & AXONOMETRIC FLOOR PLAN



LEVEL 3 - FLOOR PLAN & AXONOMETRIC FLOOR PLAN



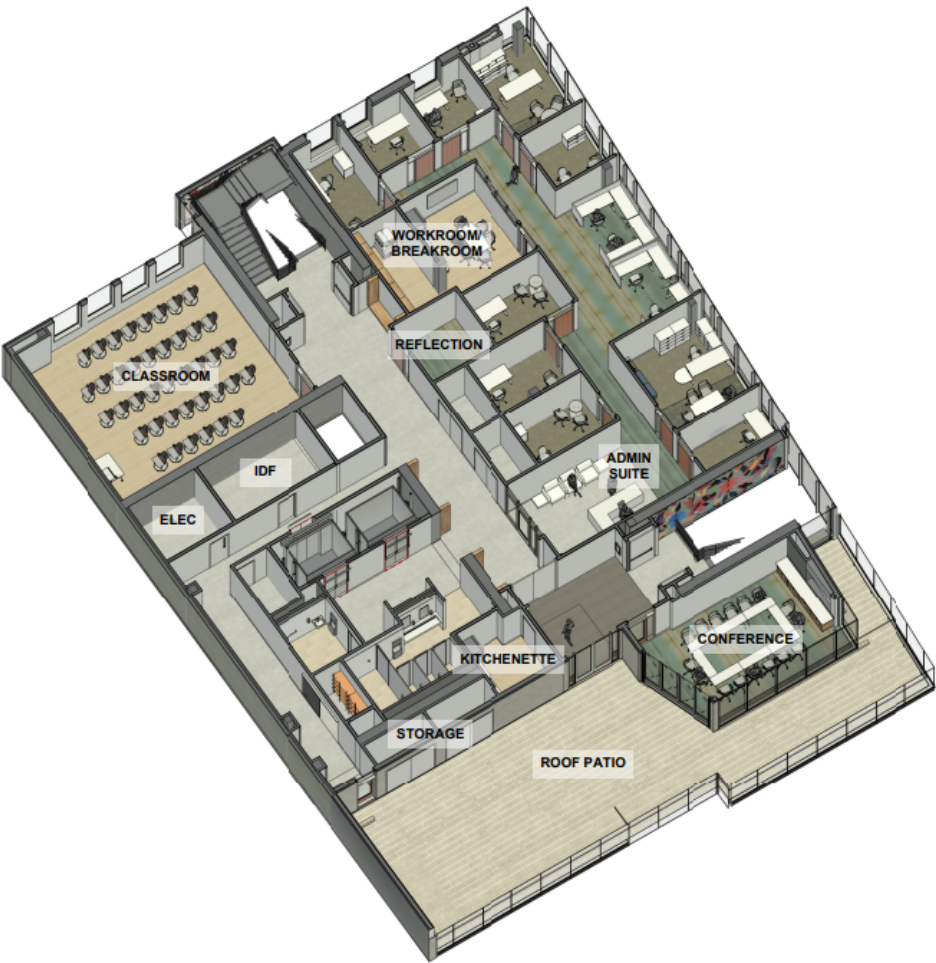
LEVEL 4 - FLOOR PLAN & AXONOMETRIC FLOOR PLAN



LEVEL 5 - FLOOR PLAN & AXONOMETRIC FLOOR PLAN



LEVEL 6 - FLOOR PLAN & AXONOMETRIC FLOOR PLAN



Next Steps



- **Construction Document Phase:**
 - Focus Meetings for Reception Desk
 - Focus Meetings for Furniture
 - Mock-up at Center Street for writeable wall surfaces at classrooms
- **Students / Community - Art Opportunities – Possible mural / art:**
 - Student Lounge, South Stair, & Lobby
- **Build Peralta Website for follow-up information**
- **Submission to DSA for Permit**



Questions?



Rendering by:
XL Construction + Ratcliff