




**BERKELEY CITY COLLEGE**  
1974  
TRANSFORMING LIVES

# EMP to Strategic Planning Framework

Fall 2023

Copyright © 2022 Peninsula Community College District. All Rights Reserved.

1

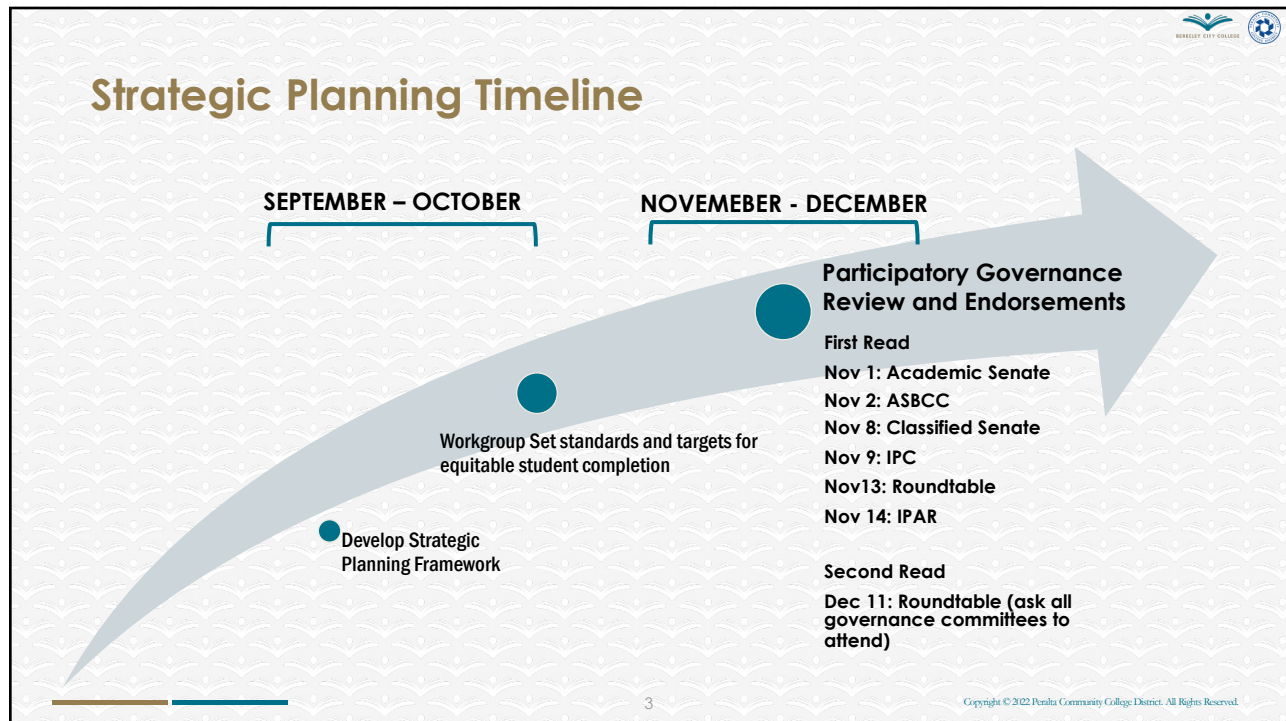


## Educational Master Plan Shared Vision

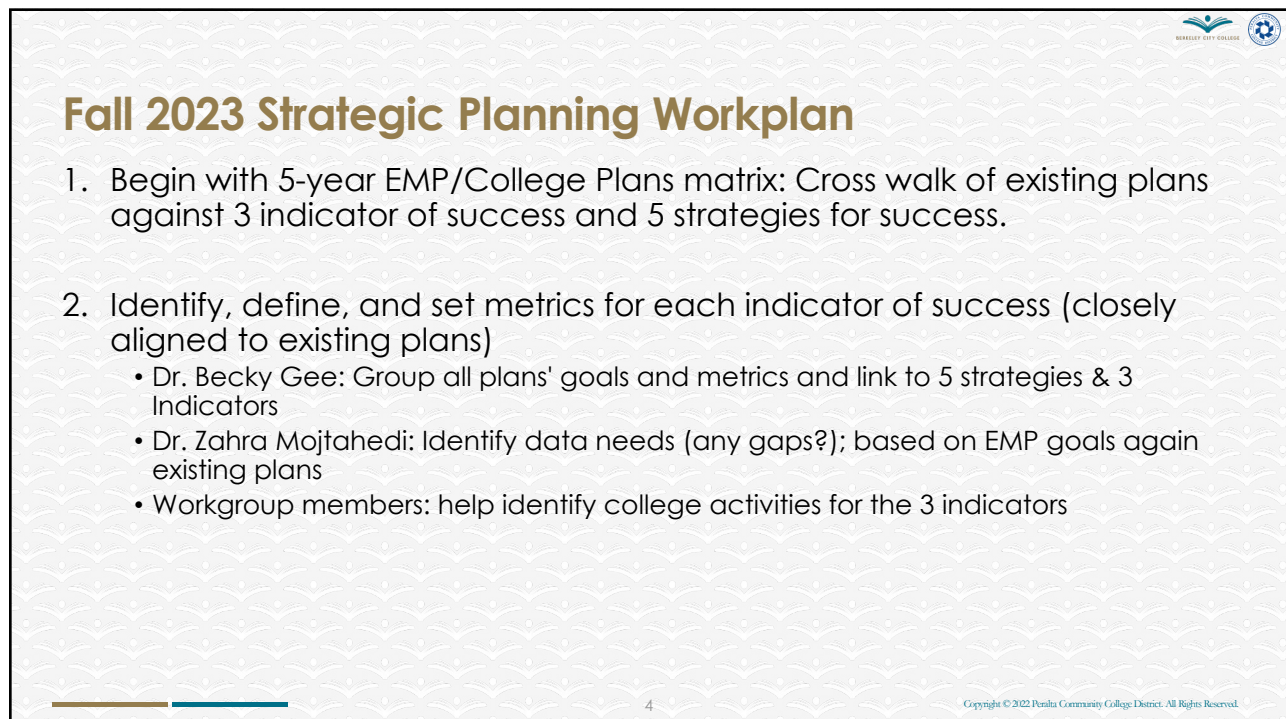
STRATEGIES FOR SUCCESS	INDICATORS OF SUCCESS	GOAL
Practice Data Informed Processes & Innovations	<b>Student Engagement &amp; Success</b> [Insert metrics here]	<b>Equitable Student Completion</b>
Institutionalize Culturally Relevant Professional Development	<b>Responsive Teaching &amp; Student Support</b> [Insert metrics here]	
Invest in BCC Vision & Goals	<b>Inclusive Community</b> [Insert metrics here]	
Advocate for Diversity, Equity, Inclusion, Accessibility		
Secure Strong Community Partnerships		

Copyright © 2022 Peninsula Community College District. All Rights Reserved.

2



3



4



## EMP & College Plans Matrix

BCC's EMP will serve as a guide for its other college plans (Integrated Strategic Enrollment Plan; Facilities Plan; Technology Plan; Diversity, Equity, and Inclusion Plan; Distance Education Plan; and Guided Pathways).

Each college plan is designed to contribute to equitable student completion

After 5-year Strategic Plan is adopted, all expired institutional plans will resume revision process as of spring 2024

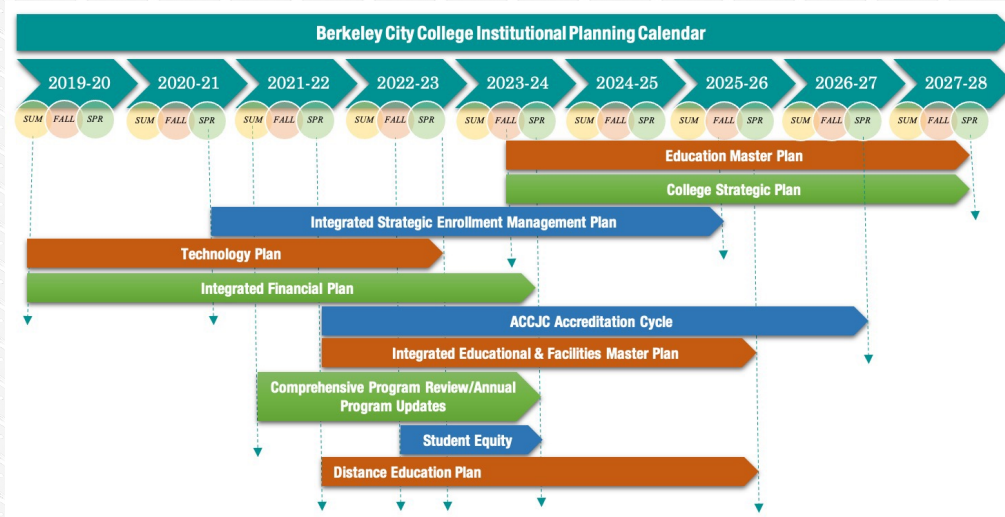
Category	College Plans	Integrated Strategic Enrollment Plan	Facilities Plan	Technology Plan	Diversity, Equity, and Inclusion Plan	Distance Education Plan	Guided Pathways
Indicators of Success	Student engagement and success	↻			✓	✓	✓
	Responsive teaching and learning			✓	✓	✓	✓
	Inclusive community	↻	✓		✓	✓	✓
Strategies for Success	Practice data informed processes and innovations	✓	✓	✓	✓	✓	✓
	Institutionalize culturally relevant professional development	✓		✓	✓	✓	✓
	Invest in BCC vision and goals	✓		✓	✓	✓	✓
	Advocate for diversity, equity, inclusion, and accessibility	✓	✓	✓	✓	✓	✓
	Secure strong community partnerships	✓			✓		✓

5

Copyright © 2022 Peninsula Community College District. All Rights Reserved.

5

After 5-year Strategic Plan is adopted, all institutional plans will resume revision process as of spring 2024 (show plans and their respective begin/end timelines)



6

Copyright © 2022 Peninsula Community College District. All Rights Reserved.

6



## Fall 2023 Strategic Planning Workplan

1. Roundtable: Identify members for Strategic Planning workgroup
2. Workgroup: Create an outline of the strategic plan
3. Divide assignments among the workgroup members in alignment with the completion timeline
4. Disseminate draft for governance committee review
5. Annual review & assessment of EMP outcomes and improvement plan

### Introduction Section:

- Annual assessment process and plan
- Review of annual goals, recommendations to improve college plan, activities to further support success or remove barriers to meet 5 year goals.
- IPC will lead the review of outcomes and report plans for improvements to Roundtable annually.



## Strategic Planning Workgroup Structure

### Strategic Planning Workgroup (proposed)

1. President
2. VPI
3. VPSS
4. VPAS
5. Institutional Researcher
6. Classified Senate President (or designee)
7. Faculty Senate President (or designee)
8. ASBCC (or designee)

Provide monthly updates to Roundtable

### Research & Classified Support

1. Faculty Researcher: Dr. Becky Gee
2. Faculty Researcher: Zahra Mojtahedi
3. Classified Support: Djenilin Mallari

- EMP webpage will provide an opportunity for the public to participate and provide feedback on our progress