

# Berkeley City College Higher Education Emergency Relief Funds (HEERF) Allocations and Expenditures

Martin De Mucha Flores, Associate Dean of Educational Success and Student Equity and Achievement

Dr. Stacey Shears, Vice President of Student Services

2/22/21

# What is HEERF ?

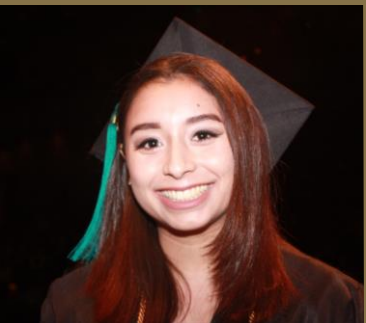
- Coronavirus Aid, Relief and Economic Security (CARES) Act includes:
- Higher Education Emergency Relief Fund that provides \$14 billion in emergency funding to higher education
- More than \$6 billion must go directly to students as emergency financial grants for **expenses** related to the disruption of campus operations due to the COVID-19 crisis



# Allowable Institutional Expenses

Institutional portion funds may be used to defray expenses associated with the college's response to the coronavirus include:

- lost revenue
- reimbursement for expenses already incurred
- technology costs associated with a transition to distance education
- faculty and staff trainings
- payroll
- student support activities authorized by the HEA that address needs related to coronavirus
- to make additional financial aid grants to students.



# Allocations & Timelines



- **HEERF I: Berkeley City College \$1,844,524**
  - Direct Student Aid: \$922,262
  - Institutional Funds: \$922,262
  - April 9, 2020 the Dept. of Ed. published a list of institutional allocations
  - May 12, 2020 direct student aid funds posted
  - July 21, 2020 Institutional CARES funds came to the colleges
  
- **HEERF II: Berkeley City College \$4,706,915**
  - Direct Student Aid: \$922,262 minimum
  - Institutional Funds: \$3,784,693
  - Anticipated availability March 15, 2021

# BCC Planning Assumptions for HEERF



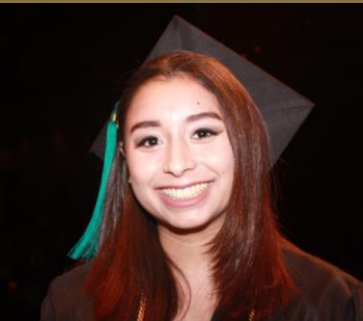
- Maximize the amount of funds that go directly into students' hands to meet their basic needs
- Ensure HEERF funds support teaching and learning including instruction, student support and safe and healthy facilities for teaching and learning.

# HEERF I Planning Process



- Executive Cabinet reviewed faculty survey and student survey results from March 2020
- Vice President of Instruction, Director of Business Services and Vice President of Student Services provided oversight of the plan for use of funds informed by:
  - Surveys
  - Discussion with Department Chairs
  - Reviewing instructional needs with Deans and Faculty Coordinators
  - Reviewing student services needs with Deans, Counseling Faculty and program leads

# HEERF I Expenditure Summary (May 23, 2020 – May 22, 2021)



	Institutional	Direct Student Aid	Sub Total
Allocation	\$922,262.00	\$922,262.00	\$1,844,524.00
Expensed	\$173,037.00	\$795,775.00	\$968,812.00
Encumbered	\$400,000 – Technology, Instructional Equipment & PPE	\$126,487.00	\$400,000.00 - Tech. Instr. Equip, & PPE
	\$349,225 – Direct Student Aid		\$475,712.00 Student Aid
		<b>Total</b>	<b>\$1,844,524.00</b>

For more information visit: [CARES ACT: Higher Education Emergency Relief Fund](#)

# HEERF I Expenses



Funds Expended Categories	Institutional	Direct Student Aid
Direct Student Emergency Assistance	\$0.00	\$795,775
Direct Student Technological Assistance	\$2,399.00	N/A
Campus Safety Supplies	\$20,646.00	N/A
Purchasing or Leasing additional instructional equipment and supplies	\$59,813.00	N/A
Faculty and Staff Training to support student teaching and learning	\$28,594.00	N/A

\* Reflects expenses up to December 30, 2020

CARES Quarterly reports link [https://www.berkeleycitycollege.edu/wp/financial\\_aid/emergency-aid/](https://www.berkeleycitycollege.edu/wp/financial_aid/emergency-aid/)



# What is HEERF II?

- The [Coronavirus Response and Relief Supplemental Appropriations Act, 2021](#) (CRRSAA) includes:
- Higher Education Emergency Relief Fund that provides \$81.9 billion in emergency funding to higher education
- All higher education institutions are required to allocate the same amount of funds towards emergency student aid that was awarded in HEERF I.



# CRRSAA: HEERF II Allocation

(June 1, 2021 – June 1, 2022)



	Institutional	Student Aid	
Allocation	3,006,915.00	1,700,000.00	4,706,915.00
Planned Expenditures	-	1,700,000.00	

[Coronavirus Response and Relief Supplemental Appropriation Act \(CRRSAA\): HEERF II website.](#)



# HEERF II Planning Assumptions

- Maximize the amount of funds that go directly into students' hands
- Ensure HEERF funds support teaching and learning including instruction, student support and safe and healthy facilities for teaching and learning.



# HEERF II Community Input- Spring 2021



- Department Chairs Council
- Student Services leadership team
- Instruction leadership team
- IPAR
- Classified Senate
- Academic Senate
- ASBCC
- Leadership Council



# QUESTIONS

