

College Roundtable for Planning & Budgeting : Institutional Planning Overview

Angélica Garcia, Ed.D., President & Co-chair

Matthew Freeman, Academic Senate President & Co-chair

January 25, 2021

Institutional Planning

- Accreditation
- Updates Needed
 - Strategic Plan (5 years)
 - Education Master Plan (7-10 years)
 - Integrated Enrollment Management Plan
- State Alignment- CCCCCO
 - Vision for Success
 - Call to Action
- District Alignment – BP & AP 3250
 - District Strategic Plan
 - Participatory Governance Council
 - PPL Consulting Firm: Dr. Riggs as lead (assisted with IIID for ISER and the November Special Report)



Berkeley City College Process – Slowing it down to get it right

■ Participatory Governance

- Institutional Planning Committee
- College Roundtable for Planning & Budgeting

■ Activities

- January Campus Discussion
 - January 28, 4:00 – 5:00 pm Cafécito with the President
 - February Institutional Planning Work
 - Constituency groups – Discuss in Leadership Council 2/10/21
- February – March
 - College input from various stakeholders and constituency groups
 - Alignment with District Strategic Planning
- April – May
 - Drafting of Strategic Plan and Ed Master Plan
 - Route through governance groups with final recommendation at College Roundtable for Planning & Budgeting– Possible work extended into the summer and fall 2021



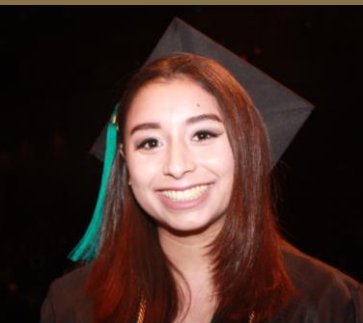
Berkeley City College Process – Slowing it down to get it right



- February – March
 - College input from various stakeholders and constituency groups
 - Alignment with District Strategic Planning
- March Site Visit– Update Visiting Team of our intentional efforts to slow the process down to reset, review, and set into motion
- April – May
 - Drafting of Strategic Plan and Ed Master Plan
 - Route through governance groups with final recommendation at College Roundtable for Planning & Budgeting
 - Possible work extended into the summer and fall 2021

Enrollment Management- “Everyone’s Business”

- Sub-text of Institutional Planning is designing a college that meets the academic and support needs of students and the local community
- Spring 2021 to include ongoing work of the Integrated Enrollment Management Committee
 - Continued efforts in identified areas for growth
 - Integration of college areas
- Instructional Areas
 - Scheduling for programs of study versus course/time preference
 - Comprehensive Program Review
 - Academic Support- Retention
- Student Services
 - Enrollment Services- from Recruitment to Registration
 - Financial Aid- Literacy and Increase in Pell and California College Promise Grant (CCPG)
 - Certificate and Degree Completion
 - Comprehensive Support Services- Retention
- Business & Administrative Services
 - SCFF metrics alignment
 - Fiscal Resources allocated to critical areas





Thank You!

