



BERKELEY CITY COLLEGE CAMPUS EXPANSION

ROUNDTABLE
APRIL 22, 2019

IMAGE SOURCE: BCC

**NOLL
& TAM**
ARCHITECTS

Where we left off...

REHABILITATION PROGRAM APPROVED BY DSA

2 ½ renovated floors

Added area: 25,000 GSF

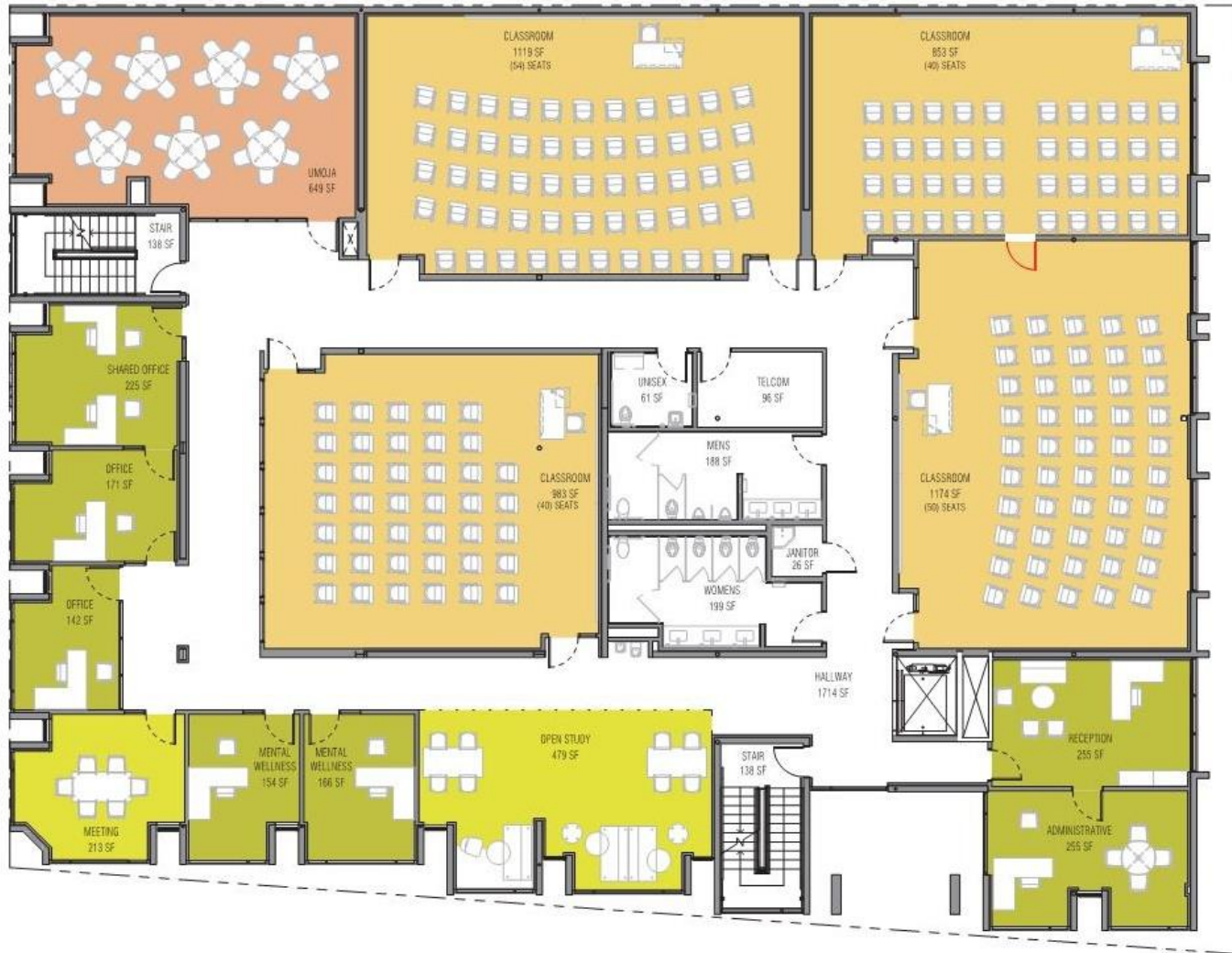
No renovation at 2050 Center Street



- LEGEND
- CLASSROOM
 - HEALTH CENTER
 - BOOKSTORE
 - MEETING / STUDY
 - LOUNGE / STUDY
 - SECURITY
 - UTILITY

GROUND FLOOR

SEPTEMBER 6, 2017



- LEGEND
- MEETING/STUDY
 - OFFICE
 - PROGRAM SPACE

SECOND FLOOR

SEPTEMBER 6, 2017



- LEGEND
- CLASSROOM
 - MEETING/STUDY
 - OFFICE
 - UMOJA

THIRD FLOOR

SEPTEMBER 6, 2017

Where we are now...

NEW BUILDING: 6 floors

Added area: 60,000 GSF

Renovation at 2050 Center Street

PROGRAM GOALS

- TWO BUILDINGS TO CREATE A SINGLE CAMPUS
- INCREASE CLASSROOM SPACE
- INCREASE LIBRARY & LEARNING RESOURCE CENTER SPACES
- INCREASE LAB SPACE IN 2050 CENTER
- INCREASE OFFICE SPACE FOR FULL- AND PART-TIME FACULTY
- SUPPORT STUDENT SUCCESS
 - Health Center
 - Learning Communities
 - Learning Resource Center

2016/2017 – Milvia Renovation Project

2000 Center – to be relinquished

2118 Milvia

Complete Building – not an outpost

Maximize Classrooms (replace 2000 Center + 4)

Faculty and Administrative Offices (Dean)

Student Activities and Services

- Health center
- Veterans
- Learning Communities
- Bookstore
- Lounge

Renovation Footprint (2 ½ Floors) – 25,000 OGSF

2050 Center

Minor Renovation

- Repurpose space vacated by functions moving to Milvia

Renovation Footprint - NOT INCLUDED in Project

2019 – BCC Campus Expansion Project

2000 Center – to be relinquished

2118 Milvia

Complete Building – not an outpost

Maximize Classrooms (replace 2000 Center + TBD)

Faculty and Administrative Offices (Dean + College Administration)

Student Activities and Services

- Health center
- Veterans
- Learning Communities
- Bookstore
- Lounge
- Learning resource Center

New Building Footprint (6 Floors) – 60,000 OGSF

2050 Center

Limited Remodel

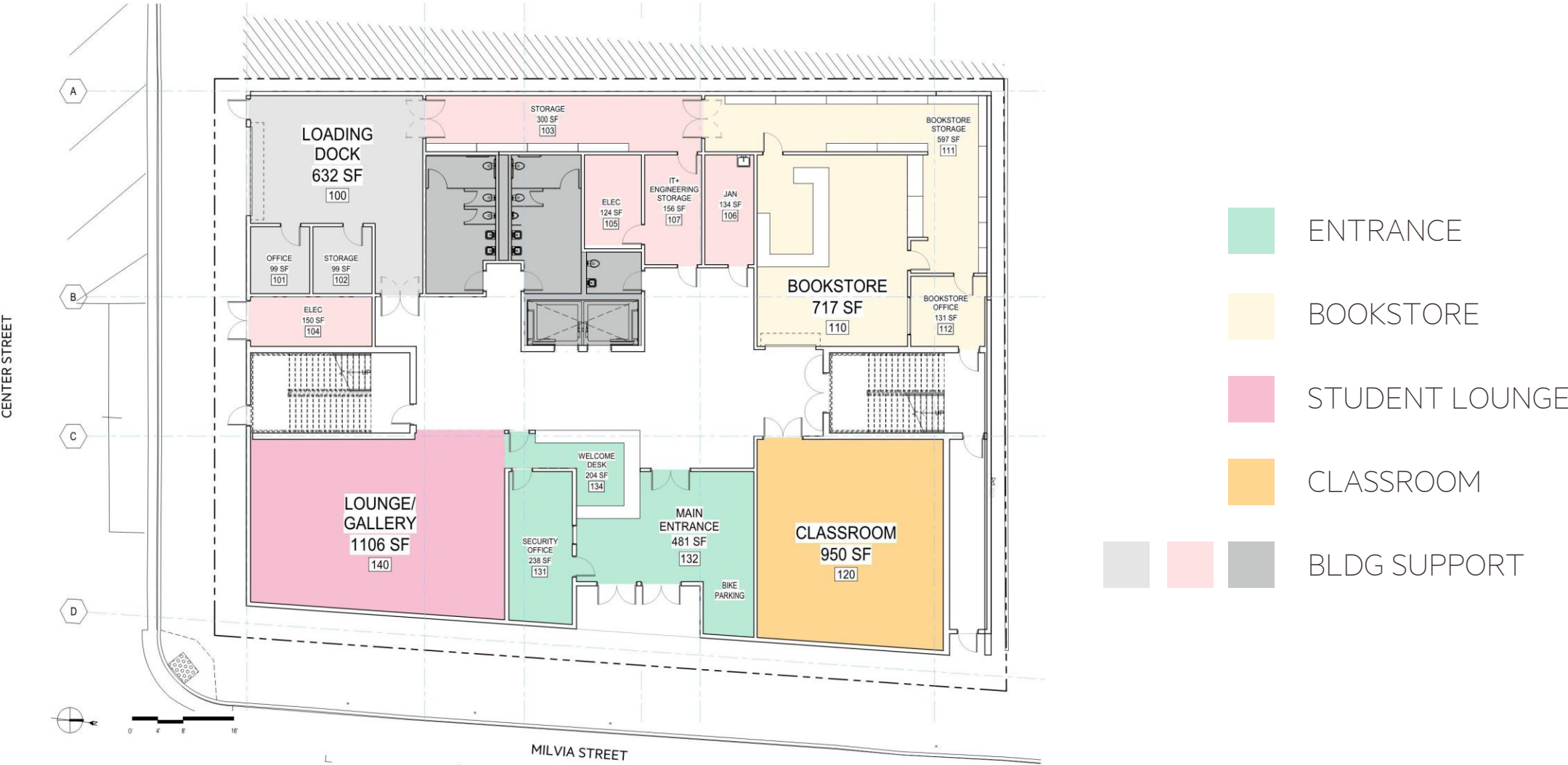
- Expand STEM Labs
- Classrooms
- Increase Library
- Improve faculty offices

Renovation Footprint – APPROXIMATELY 27,700 GSF

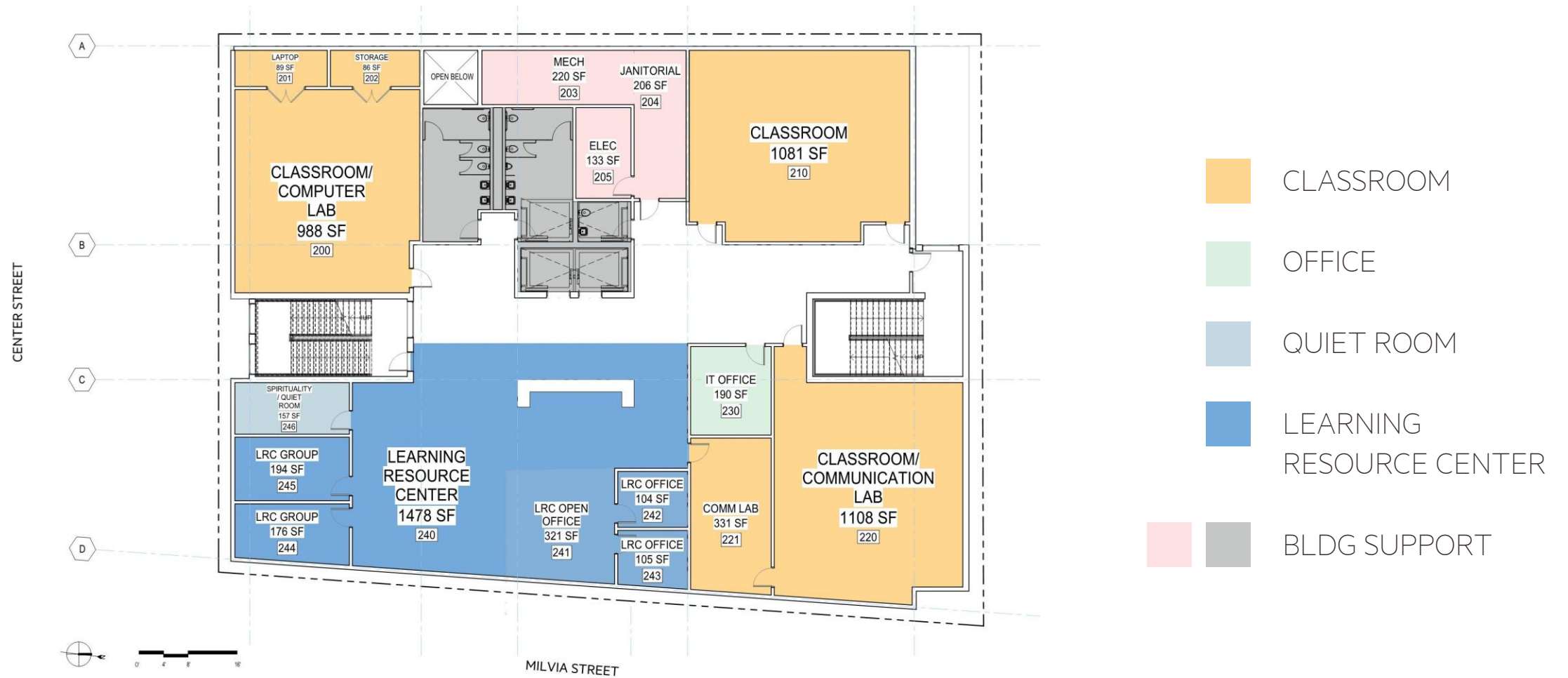
INSTRUCTIONAL SPACE SUMMARY

SPACE TYPE	BEFORE PROJECT	AFTER PROJECT		
	Total	Total	Milvia	Center
Classrooms	28*	34	13	21
Large Lecture (Tiered)	2	2	0	2
Computer Classrooms	10	11	1	10
Science Labs	5	10	0	10
Art Studios	2	2	2	0
	*Includes Annex			

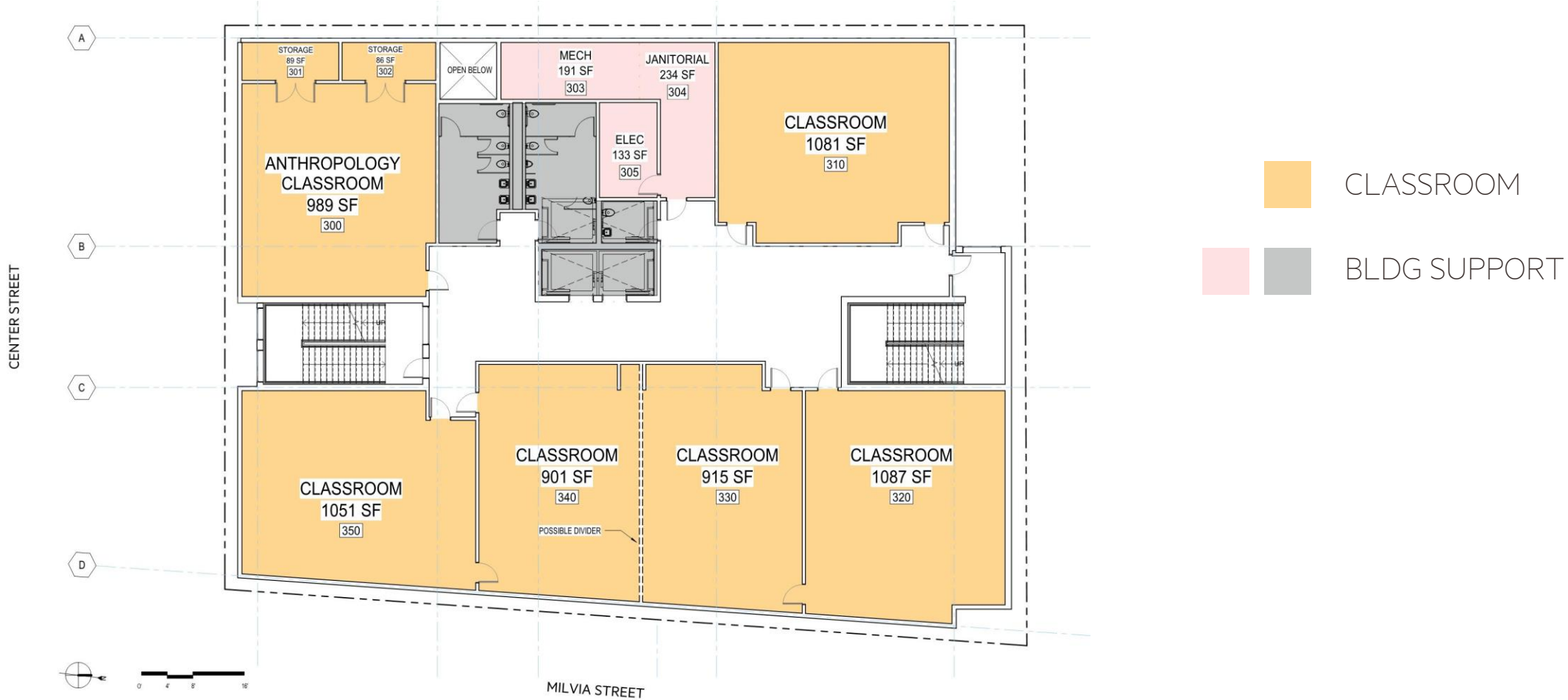
FLOOR 1 – 2118 MILVIA ST.



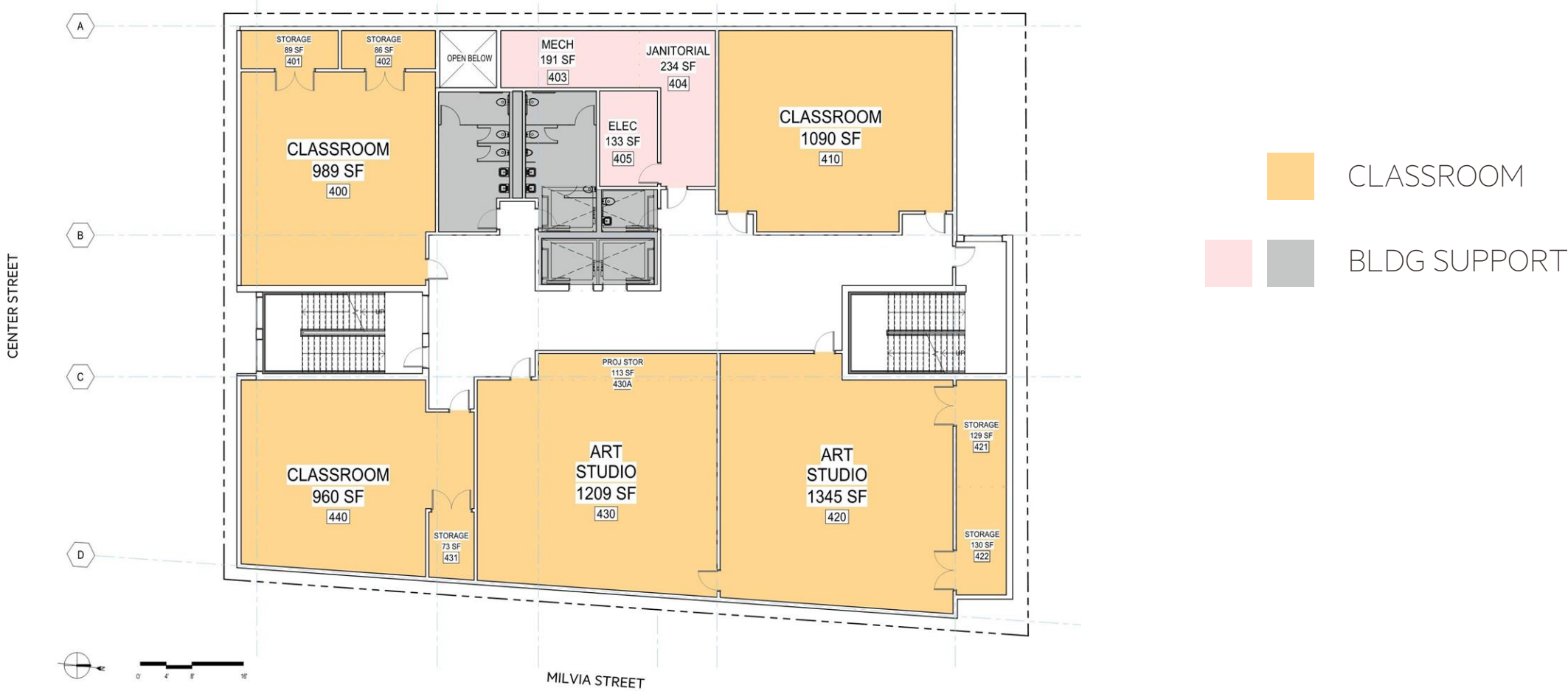
FLOOR 2 – 2118 MILVIA ST.



FLOOR 3 – 2118 MILVIA ST.



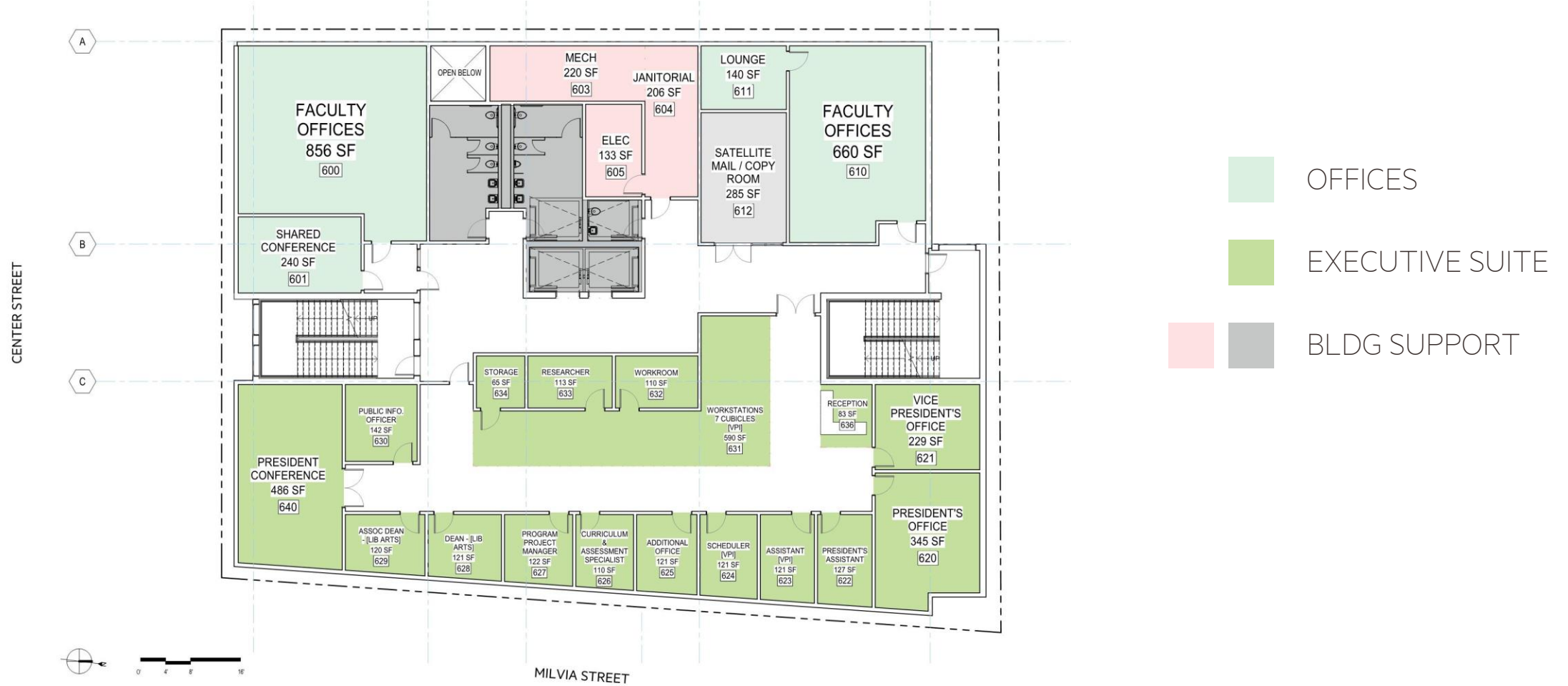
FLOOR 4 – 2118 MILVIA ST.



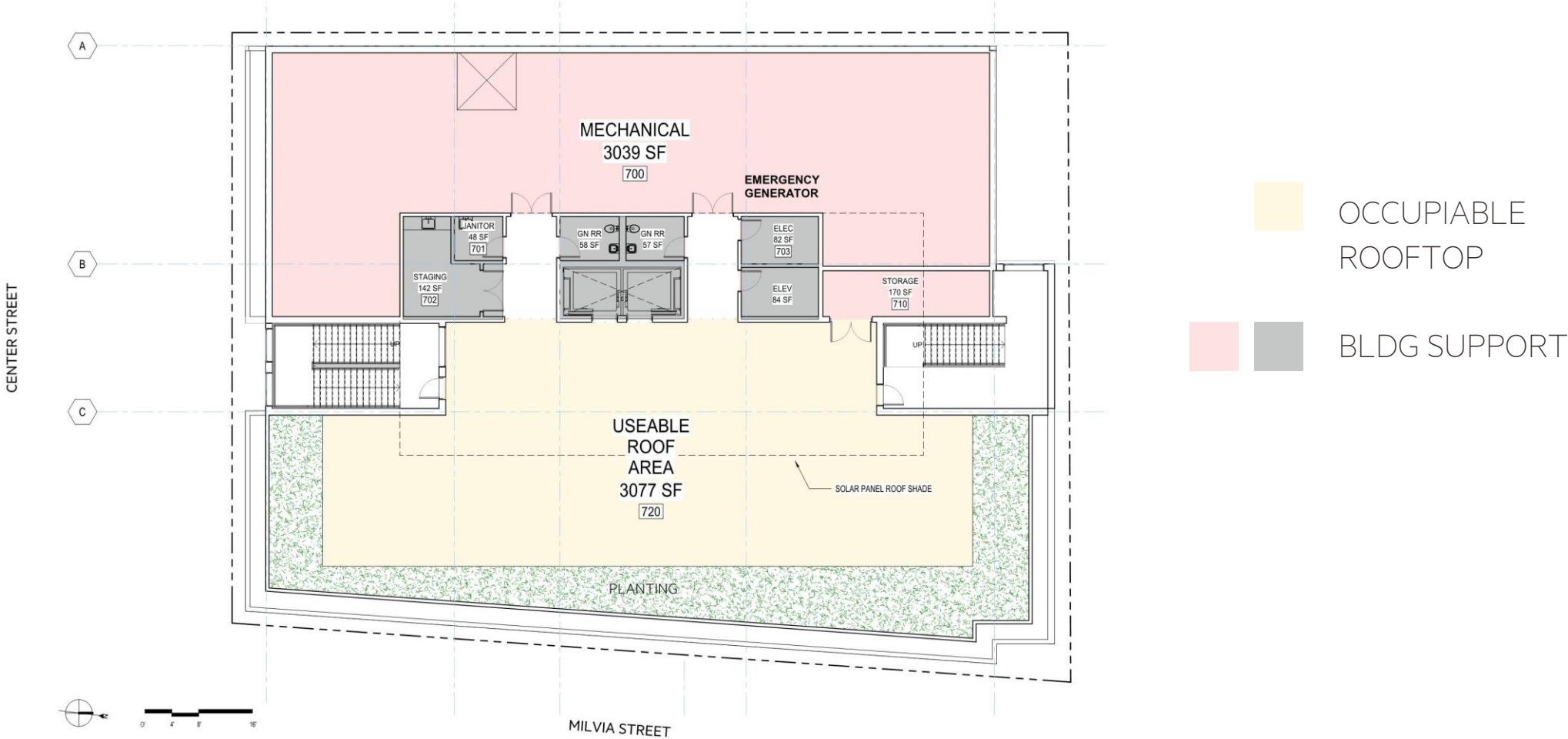
FLOOR 5 – 2118 MILVIA ST.



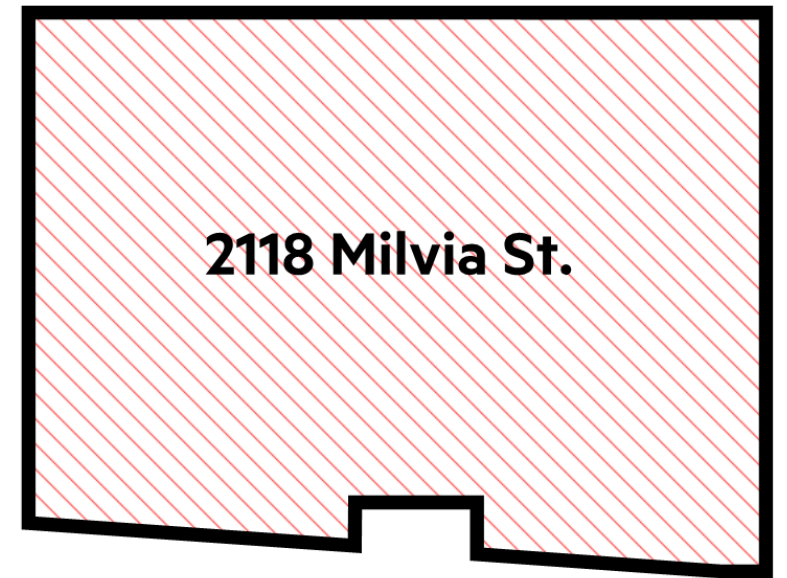
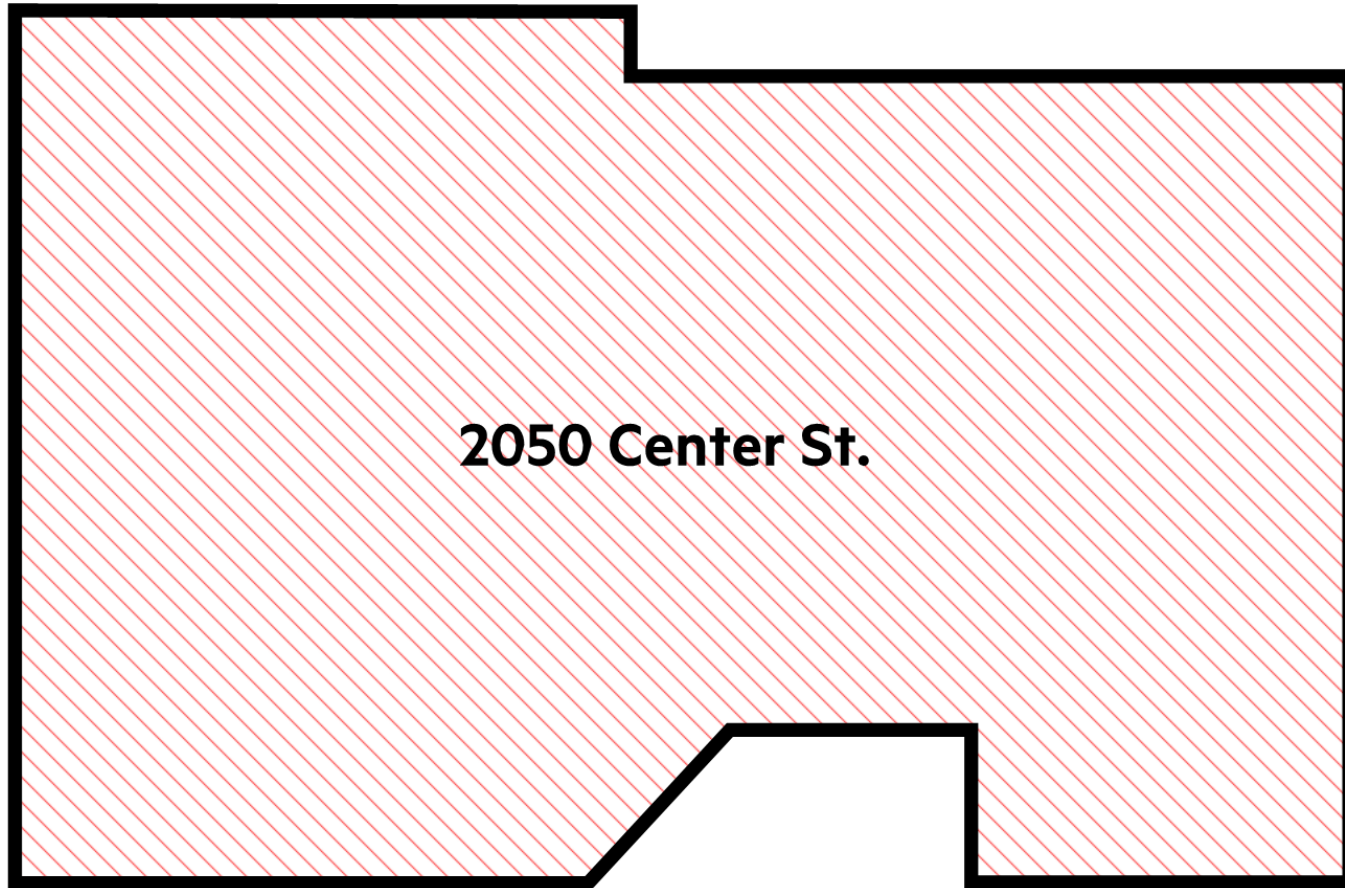
FLOOR 6 – 2118 MILVIA ST.



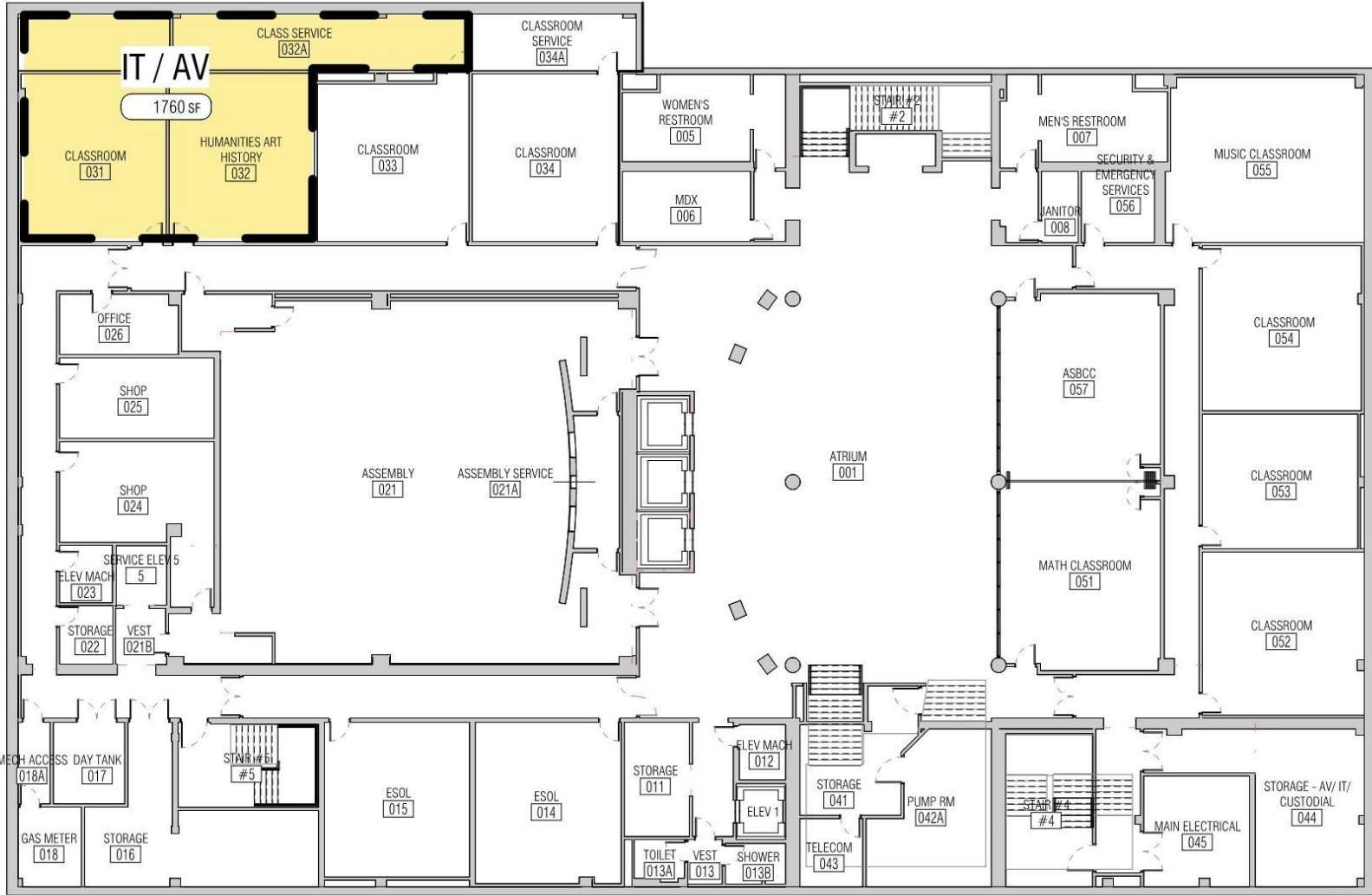
ROOF – 2118 MILVIA ST.



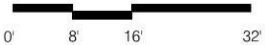
SIZE COMPARISON



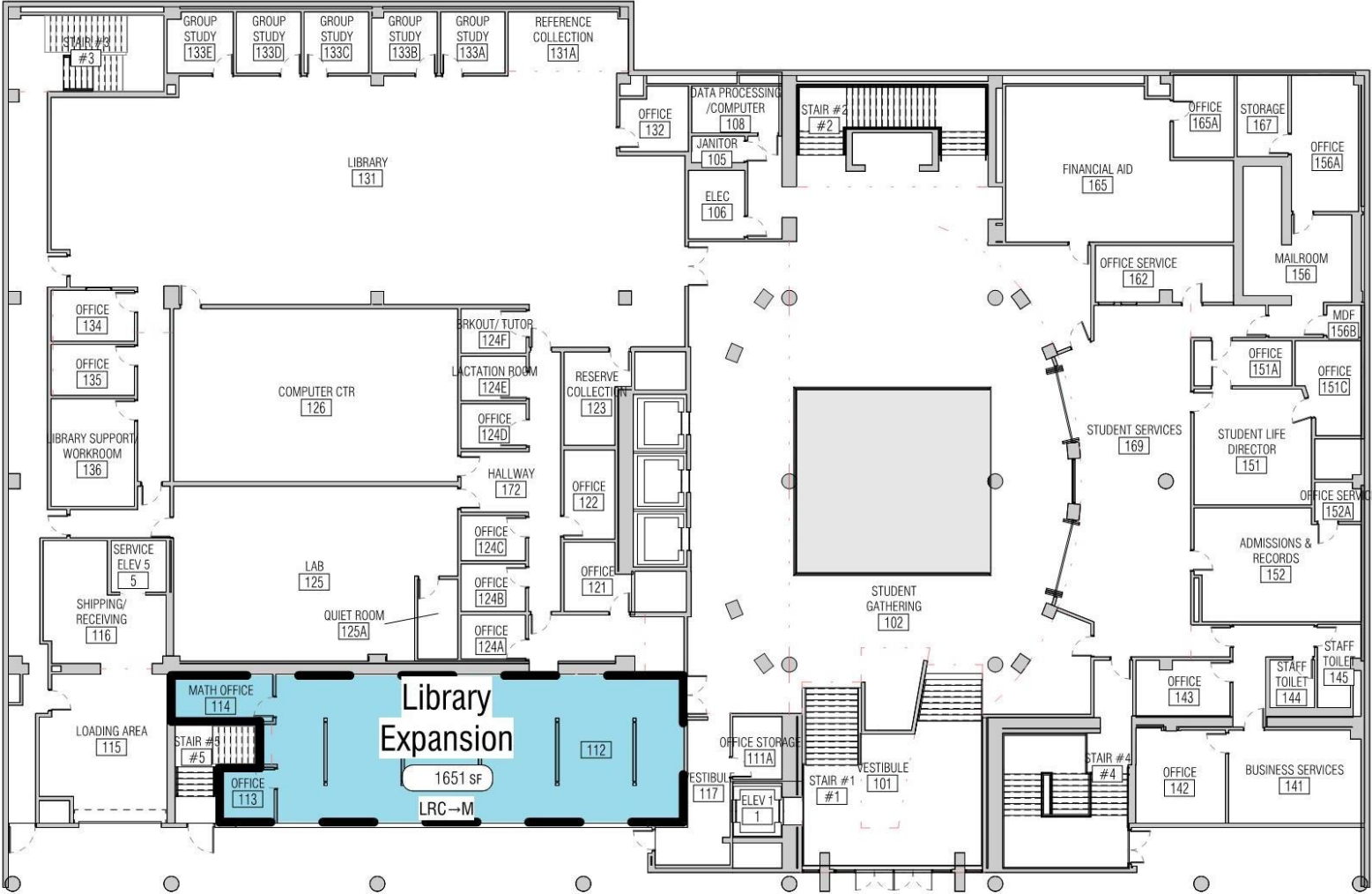
FLOOR BASEMENT - 2050 CENTER ST.



- MAJOR REMODEL
- MINOR REMODEL
- RE-ASSIGN



FLOOR 1 - 2050 CENTER ST.



- MAJOR REMODEL
- MINOR REMODEL
- RE-ASSIGN



FLOOR 2 - 2050 CENTER ST.



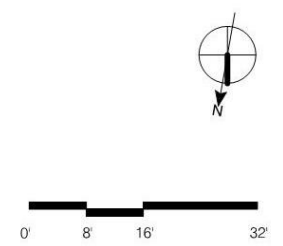
- MAJOR REMODEL
- MINOR REMODEL
- RE-ASSIGN



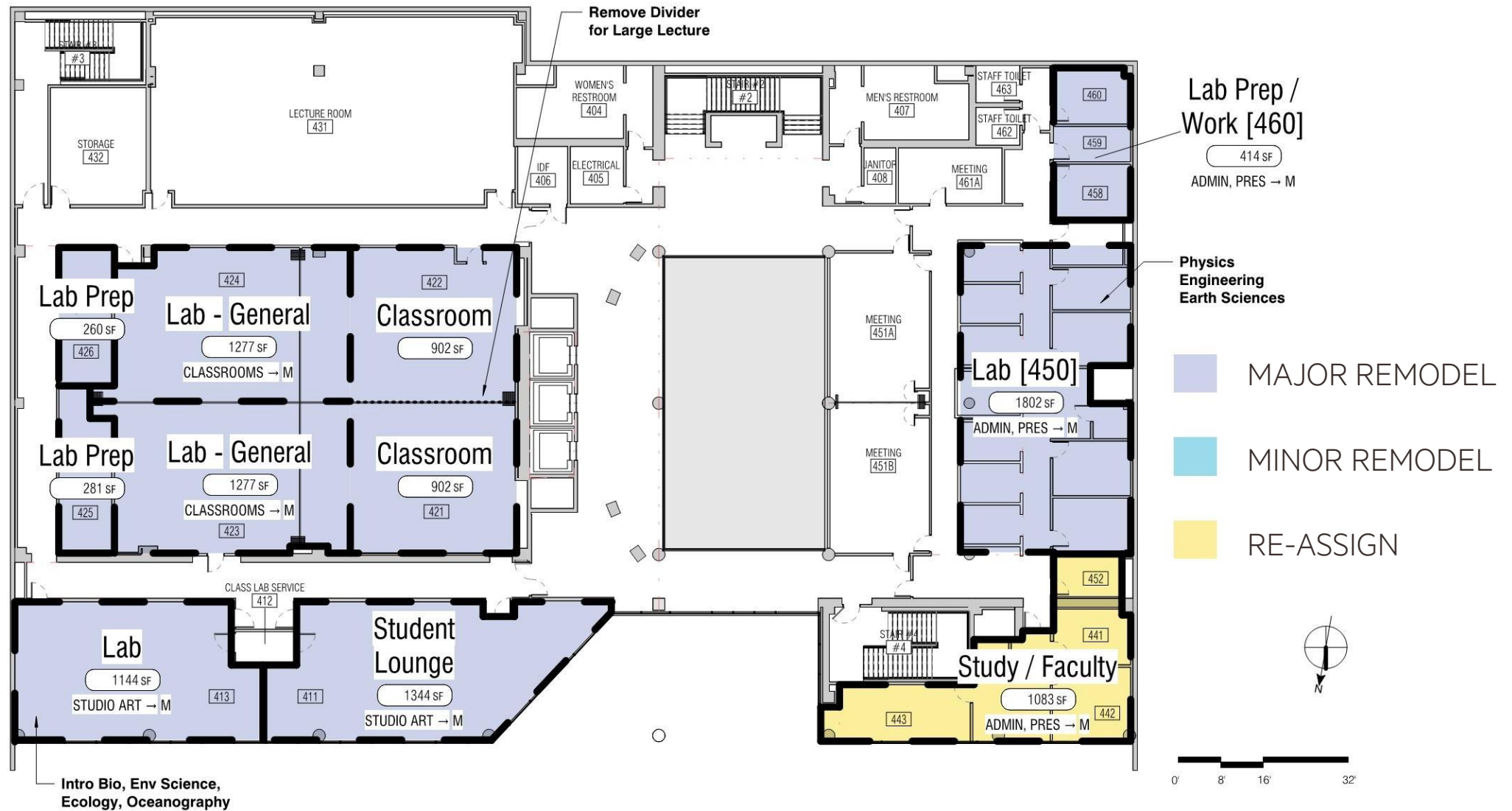
FLOOR 3 - 2050 CENTER ST.



- MAJOR REMODEL
- MINOR REMODEL
- RE-ASSIGN



FLOOR 4 - 2050 CENTER ST.



FLOOR 5 - 2050 CENTER ST.



PROGRAM ASPIRATIONS

- UNIFIED
- WELCOMING
- ACTIVE
- FLEXIBLE
- HEALTHY
- SUSTAINABLE
- And...