

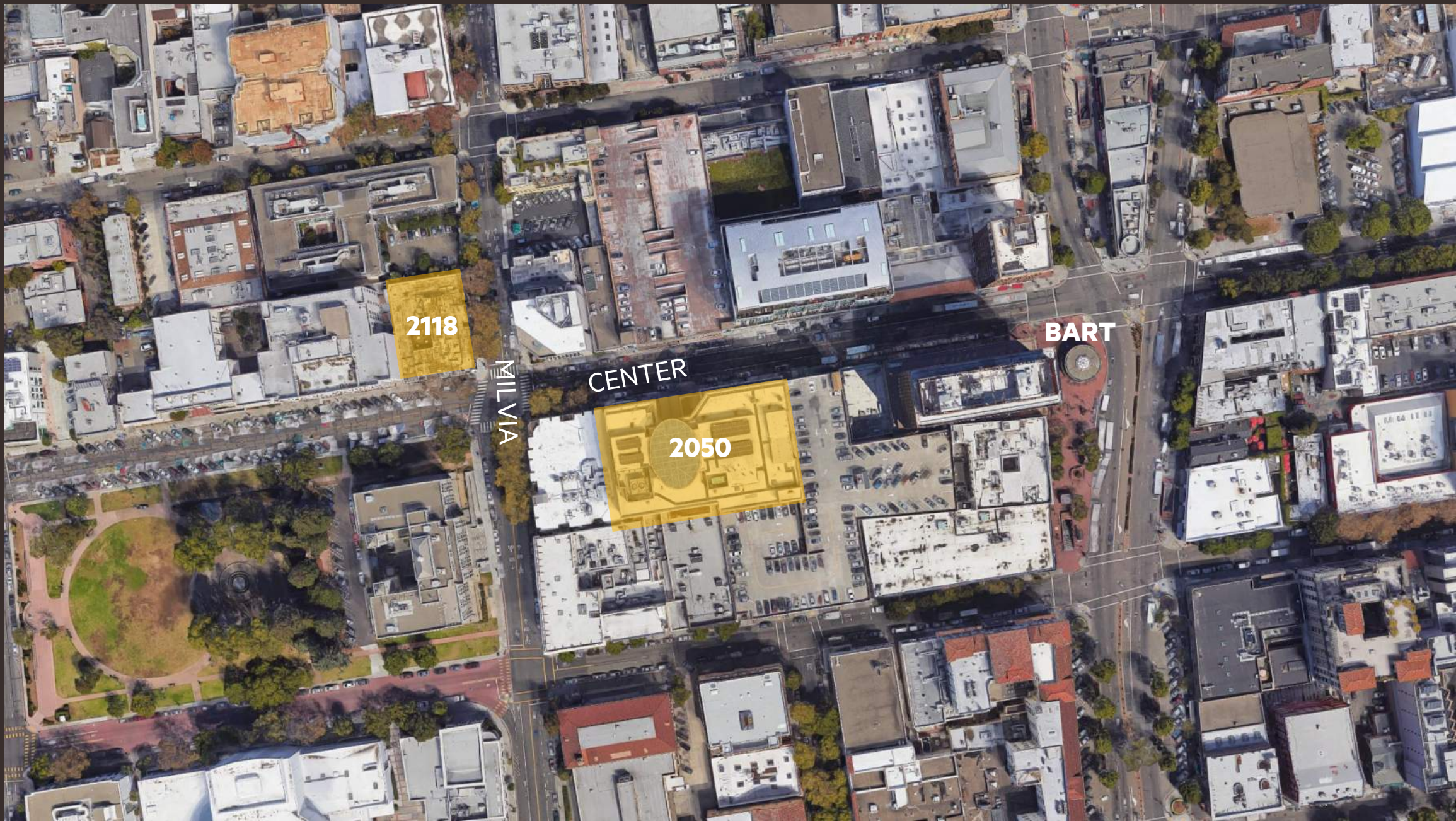


**BERKELEY CITY COLLEGE
2118 MILVIA STREET
PROJECT UPDATE**

14 NOVEMBER 2017

**NOLL
& TAM**
ARCHITECTS





2118

2050

MILL VIA

CENTER

BART





SimplexGrinnell
BE SAFE
A United Technologies Company
LIC: 006027

GENERAL BACKGROUND

- District purchased existing office building, half a block from 2050 Center
- Intended for instructional use by BCC
- 2.5 stories, 25,400 SF – (approximate size of one floor at 2050 Center, 31,000 SF)
- Remodel and retrofit the existing building.

GOALS OF DESIGN

- As many large general classrooms as possible
- Student study space
- Promote sense of “one campus in two buildings”

PROGRAM COMPONENTS

- 7 large general classrooms, variety of study spaces, wellness center, bookstore, other program spaces, a few offices.
- Some unassigned open area inside on third floor to provide flexibility.

CURRENT STATUS

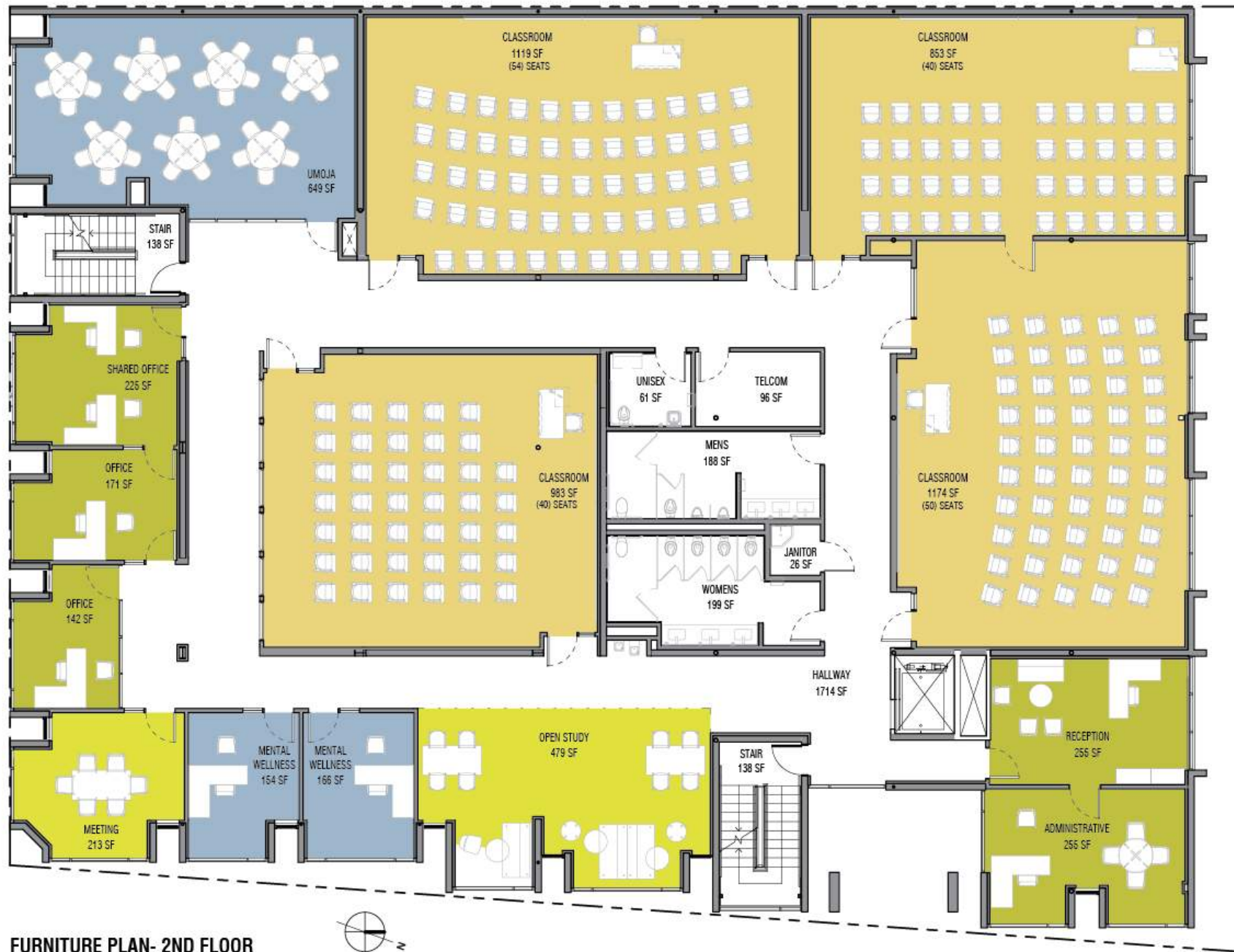
- Working closely with DSA on structural design, ensuring code compliance.
- Working closely with District and the campus on development of construction documents.
- Aiming for a building that is welcoming, supportive, and easy to maintain.
- New energy-efficient lighting throughout



- LEGEND**
- CLASSROOM
 - HEALTH CENTER
 - BOOKSTORE
 - MEETING/STUDY
 - LOUNGE/STUDY
 - SECURITY
 - UTILITY

FURNITURE PLAN- 1ST FLOOR





- LEGEND**
- CLASSROOM
 - MEETING/STUDY
 - OFFICE
 - PROGRAM SPACE

FURNITURE PLAN- 2ND FLOOR



LEGEND

- MEETING/STUDY
- OFFICE
- PROGRAM SPACE



FURNITURE PLAN- 3RD FLOOR